



**Results Framework Document
(RFD)**

FOR

**Economic and Statistical
Organisation (ESO), Punjab**

(2010-11)
(1.10.10 to 31.3.11)

INDEX

SN	Item	Page No.
1	A brief background about Economic & Statistical Organisation (ESO), Punjab	1-2
2	Section 1: Vision, Mission, Objectives and Functions	3-4
3	Section 2: Inter Se Priorities among Key Objectives, Success Indicators and Targets for the year 2010-11 (from 1.10.10 to 31.3.11)	5-8
4	Section 3: Trend Value of Success Indicators	9-12
5	Section 4: Description and Definition of Success Indicators and Proposed Measurement Methodology	13-19
6	Section 5: Specific Performance Requirements from other Departments that are Crucial for delivering Agreed Results	20-22
7	Organisational Chart of ESO, Punjab	23

A brief background about Economic & Statistical Organisation (ESO), Punjab

With the advent of the era of economic planning and development, the State Govt. created a statistical office headed by the Economic & Statistical Advisor in 1949 to cater to the statistical needs of the state. The Board of Economic Inquiry also became part and parcel of this office in 1953 which was created in 1949/1950 in PEPSU State. With the merger of Punjab and PEPSU in 1956, the present Economic & Statistical Organisation (ESO) came into existence. The ESO, Punjab has been strengthened over time to effectively respond to the growing needs of statistical analysis arising from economic growth of the states.

The ESO, Punjab makes major contribution to the database of the State and has been declared a Nodal Agency since April 2003 for effective coordination of statistical activities of all the departments in the state. The statistical needs of private sector are also met by this Organisation. The planners, research scholars, social thinkers and administrators are the major stakeholders of the statistical information available with ESO. The data collected by the organisation highlights the level of socio- economic development of the State. This data helps in formulation and evaluation of Development Programmes of the state.

Organisational Structure of ESO

ESO is headed by the Economic Adviser who is supported by 2 Directors, 3 Joint Directors, 5 Deputy Economic and Statistical Advisers at Headquarter. There are 16 technical branches at headquarter which are headed by Research Officers. Investigators, Statistical Assistants & Assistant Research Officers perform the duties of data collection, tabulation, compilation & presentation in each of the branch (Organisational Chart at Annexure I). Each district has District Statistical Office headed by Deputy Economic and Statistical Adviser.

Functional Set-up of ESO

ESO has 17 sections including establishment section at the State head quarter. The establishment section manages the human resource administration

and is manned by Superintendents, Senior Assistants, Clerks and typists. Other 16 sections are engaged in different statistical activities.

Apart from collection and compilation of primary as well as secondary data and its onward transmission to head office Deputy Economic & Statistical Adviser's office at district facilitates the process of District Planning. In addition, MPLAD Scheme is also implemented through this department.

Section 1:**Vision, Mission, Objectives and Functions****Vision:**

To be the most innovative State Statistical System in the country and best data bank for grass root level planning of the State and to effectively monitor and evaluate programmes and projects for ensuring efficient use of State and National resources.

Mission:

- i. To make available reliable and timely statistics and to undertake regular assessment of data needs for decision making.
- ii. To cater to the emerging data needs in a dynamic socio-economic context.
- iii. To adopt and evolve standards and methodologies for data generation.
- iv. To ensure and strengthen trust and confidence of all stakeholders in the State Statistical System by maintaining confidentiality of data providers and promoting integrity and impartiality of all elements of official statistics.
- v. To create common pool of all statistical personnel in all departments of State Govt. and to provide leadership and co-ordination to ensure harmonious, efficient and integrated functioning of all the elements of the State Statistical System.
- vi. To continue to assess skill requirements and develop human resources capacity at all levels of the Statistical System.
- vii. To participate and contribute actively in all national initiations and to support development of statistical system in country.
- viii. To facilitate the working of District Planning Committees.
- ix. Effective monitoring and implementation of MPLAD scheme.
- x. Effective monitoring and implementation of Twenty Point Programme-2006 in the state.

Objectives:

1. To make available data/statistics on some key parameters to planners and policy makers in Govt. and outside.
2. To evaluate development programmes & schemes.
3. To complete surveys assigned by CSO, GOI.
4. To provide efficient services to District Planning Committees for decentralised planning.
5. To implement and monitor the MPLAD scheme.
6. To monitor the Twenty Point Programme-2006 and release regular reports.

Functions:

The broad functions of Economic & Statistical Organisation are:-

- To advise the State Government on economic and statistical matters for policy decision & planning purposes.
- To coordinate statistical activities of various departments in the state.
- To collect, compile, analyse and interpret economic and statistical data and act as data bank.
- To conduct analytical and evaluation studies and surveys.
- To keep a proper liaison with the Central Statistical Organisation, Govt. of India and other State Statistical Bureaus of the country.
- To conduct training for ESO Staff. This is done by the training cell of this organization.
- To facilitate research activity of universities, research organization & individual stakeholders.

Section 2:

Inter Se Priorities among Key Objectives, Success Indicators and Targets for the year 2010-11 (from 1.10.10 to 31.3.11)

Objective	Weight	Action	Success Indicator	Unit	Weight	Target/Criteria Value				
						Excellent	Very Good	Good	Fair	Poor
						100%	90%	80%	70%	60%
1.To make available data/statistics on some key parameters to planners and policy makers in Govt. and outside.	50	Compilation and release of Provisional Estimates of State Income 2008-09.	Dissemination of Provisional Estimates of State Income 2008-09.	Date	10	15.2.11	23.2.11	28.2.11	10.3.11	20.3.11
		Compilation and release of Quick Estimates of State Income 2009-10.	Dissemination of Quick Estimates of State Income 2009-10.	Date		15.2.11	23.2.11	28.2.11	10.3.11	20.3.11
		Compilation and release of Advance Estimates of State Income 2010-11.	Dissemination of Advance Estimates of State Income 2010-11.	Date		15.2.11	23.2.11	28.2.11	10.3.11	20.3.11
	Compilation and release of Statistical Abstract of Punjab 2010.	Dissemination of Statistical Abstract of Punjab 2010.	Date	8	As per the date of Budget Session of Punjab Assembly.					
	Compilation and release of Economic Survey of Punjab 2010-11.	Dissemination of Economic Survey of Punjab 2010-11.	Date	5	As per the date of Budget Session of Punjab Assembly.					
	Compilation and release of Basic Statistics of Punjab 2010.	Dissemination of Basic Statistics of Punjab 2010 within 40 days from printing of Statistical Abstract .	Days	2	Within 40 days	Within 50 days	Within 60 days	Within 70 days	Within 80 days	
	Compilation and release of Economic and Purpose Classification of Budge 2009-10.	Dissemination of Economic and Purpose Classification of Budget 2009-10.	Date	3	31.3.11	15.4.11	30.4.11	15.5.11	31.5.11	

Section 2:

Inter Se Priorities among Key Objectives, Success Indicators and Targets for the year 2010-11 (from 1.10.10 to 31.3.11)

Objective	Weight	Action	Success Indicator	Unit	Weight	Target/Criteria Value				
						Excellent	Very Good	Good	Fair	Poor
						100%	90%	80%	70%	60%
		Compilation and release of Village Directory 2008-09.	Dissemination of Village Directory 2008-09.	Date	8	31.10.10	15.11.10	30.11.10	15.12.10	31.12.10
		Compilation and release of monthly Consumer Price Index (CPI).	Dissemination of each monthly CPI unto 25th of succeeding month.	No. of monthly Indices	4	CPI of 6 months issued in time	CPI of 5 months issued in time	CPI of 4 months issued in time	CPI of 3 months issued in time	CPI of 2 months issued in time
		Compilation and release of Index of Industrial Production (IIP) 2009-10.	Dissemination of Index of Industrial Production (IIP) 2009-10.	Date	3	31.12.10	15.1.11	31.1.11	15.2.11	28.2.11
		Compilation and release of Census of Punjab Govt. and Semi-Govt. Employees as on 31-3-08.	Dissemination of Census of Punjab Govt. and Semi-Govt. Employee as on 31-3-08.	Date	3	1.1.11	15.1.11	25.1.11	5.2.11	10.2.11
		Compilation and release of Municipal Statistics of Punjab 2008-09.	Dissemination of Municipal Statistics of Punjab 2008-09.	Date	2	31.3.11	8.4.11	15.4.11	22.4.11	30.4.11
		Compilation and release of Building Construction Cost Index (BCCI) 2010.	Dissemination of BCCI 2010.	Date	2	28.2.11	8.3.11	15.3.11	22.3.11	31.3.11
2.To evaluate development Programmes & Schemes.	5	Completion of evaluation report on "Information & Communication Technology Project".	Completion of evaluation report on "Information & Communication Technology Project".	Date	5	31.3.11	8.4.11	15.4.11	22.4.11	30.4.11

Section 2:

Inter Se Priorities among Key Objectives, Success Indicators and Targets for the year 2010-11 (from 1.10.10 to 31.3.11)

Objective	Weight	Action	Success Indicator	Unit	Weight	Target/Criteria Value				
						Excellent	Very Good	Good	Fair	Poor
						100%	90%	80%	70%	60%
3.To complete surveys assigned by CSO,GOI.	10	Completion of survey of Non-Profit Institutions.	Completion of survey of Non-Profit Institutions.	Date	10	31.3.11	8.4.11	15.4.11	22.4.11	30.4.11
4.To provide efficient secretarial services to District Planning Committees for decentralised planning.	20	Releasing of funds under Plan schemes.	To release funds as per the financial sanction of Govt.	%age Release	20	100%	95%	90%	85%	80%
5.To implement and monitor the MPLAD Scheme.	10	Timely release of installments from GOI .	Get released remaining 22 installments (1.10.10 .to 31.3.11) from GOI.	No. of installments	3	22	15	10	8	below 8
		Review of progress of MPLAD Scheme at state level.	Convening review meetings of State Committee on MPLAD.	No. of meetings	3	1	-	-	-	-
		Compilation and uploading of Monthly Progress Reports (MPRs) on Website.	Uploading of MPRs on Website.	No. of MPRs	2	6	5	4	3	2
		Uploading of sanctioned works on website.	Display of works on website.	%age of works displayed	2	95% & above	90% & above	80% & above	70% & above	below 70%

Section 2:**Inter Se Priorities among Key Objectives, Success Indicators and Targets for the year 2010-11 (from 1.10.10 to 31.3.11)**

Objective	Weight	Action	Success Indicator	Unit	Weight	Target/Criteria Value				
						Excellent	Very Good	Good	Fair	Poor
						100%	90%	80%	70%	60%
6.To monitor the Twenty Point Programme (TPP)-2006 and release regular reports.	5	Compilation and onward transmission of Monthly Progress Reports (MPRs) of TPP-2006.	Transmission of each MPR upto 25th of succeeding month.	No. of MPRs transmitted in time	5	6	5	4	3	2

**Section 3:
Trend Values of the Success Indicators**

Objective	Action	Success Indicator	Unit	Actual Value for Financial Year 2008-09	Actual Value for Financial Year 2009-10	Target Value for Financial Year 2010-11	Projected Value for Financial Year 2011-12	Projected Value for Financial Year 2012-13
1. To make available data/statistics on some key parameters to planners and policy makers in Govt. and outside.	Compilation and release of Provisional Estimates of State Income.	Dissemination of Provisional Estimates of State Income.	Date	15.2.09	15.2.10	15.2.11	15.2.12	15.2.13
	Compilation and release of Quick Estimates of State Income.	Dissemination of Quick Estimates of State Income.	Date	15.2.09	15.2.10	15.2.11	15.2.12	15.2.13
	Compilation and release of Advance Estimates of State Income.	Dissemination of Advance Estimates of State Income.	Date	15.2.09	15.2.10	15.2.11	15.2.12	15.2.13
	Compilation and release of Statistical Abstract of Punjab.	Dissemination of Statistical Abstract of Punjab.	Date	As per the date of Budget Session of Punjab Assembly				
	Compilation and release of Economic Survey of Punjab.	Dissemination of Economic Survey of Punjab.	Date	As per the date of Budget Session of Punjab Assembly				
	Compilation and release of Basic Statistics of Punjab.	Dissemination of Basic Statistics of Punjab within 40 days from printing of Statistical Abstract .	Days	Within 40 days	Within 40 days	Within 40 days	Within 40 days	Within 40 days
	Compilation and release of Economic and Purpose Classification of Budge.	Dissemination of Economic and Purpose Classification of Budget.	Date	31.3.09	31.3.10	31.3.11	31.3.12	31.3.13

Section 3:
Trend Values of the Success Indicators

Objective	Action	Success Indicator	Unit	Actual Value for Financial Year 2008-09	Actual Value for Financial Year 2009-10	Target Value for Financial Year 2010-11	Projected Value for Financial Year 2011-12	Projected Value for Financial Year 2012-13
	Compilation and release of Village Directory.	Dissemination of Village Directory.	Date	31.12.08	31.10.09	31.10.10	31.10.11	31.10.12
	Compilation and release of monthly Consumer Price Index (CPI).	Dissemination of each monthly CPI upto 25th of succeeding month.	No. of monthly Indices	CPI of 12 months issued in time	CPI of 12 months issued in time	CPI of 6 months issued in time	CPI of 12 months issued in time	CPI of 12 months issued in time
	Compilation and release of Index of Industrial Production (IIP).	Dissemination of Index of Industrial Production (IIP).	Date	19.2.09	29.1.10	31.12.10	31.12.11	31.12.12
	Compilation and release of Census of Punjab Govt. and Semi-Govt. Employees.	Dissemination of Census of Punjab Govt. and Semi-Govt. Employees.	Date	1.1.09	1.1.10	1.1.11	1.1.12	1.1.13
	Compilation and release of Municipal Statistics of Punjab.	Dissemination of Municipal Statistics of Punjab.	Date	31.3.09	31.3.10	31.3.11	31.3.12	31.3.13
	Compilation and release of Building Construction Cost Index (BCCI) .	Dissemination of BCCI.	Date	28.2.09	28.2.10	28.2.11	28.2.12	28.2.13
2.To evaluate development Programmes & Schemes.	Completion of evaluation report.	Completion of evaluation report.	No. of reports	-	1	1	1	1

Section 3:
Trend Values of the Success Indicators

Objective	Action	Success Indicator	Unit	Actual Value for Financial Year 2008-09	Actual Value for Financial Year 2009-10	Target Value for Financial Year 2010-11	Projected Value for Financial Year 2011-12	Projected Value for Financial Year 2012-13
3.To complete surveys assigned by CSO,GOI.	Completion of survey of Non-Profit Institutions.	Completion of survey of Non-Profit Institutions.	Date	-	-	31.3.11	-	-
4.To provide efficient secretarial services to District Planning Committee for decentralised planning.	Releasing of funds under Plan schemes.	To release funds as per the financial sanction of Govt.	%age Release	100%	100%	100%	100%	100%
5.To implement and monitor the MPLAD Scheme.	Timely release of installments from GOI .	Get released of installments from GOI.	No. of installments	44	44	22	40	40
	Review of progress of MPLAD Scheme at state level.	Convening review meetings of State Committee on MPLAD.	No. of meetings	1	1	1	1	1
	Compilation and uploading of Monthly Progress Reports (MPRs) on Website.	Uploading of MPRs on Website.	No. of MPRs	12	12	6	12	12
	Uploading of sanctioned works on website.	Display of works on website.	%age of works displayed	95% & above	95% & above	95% & above	95% & above	95% & above

**Section 3:
Trend Values of the Success Indicators**

Objective	Action	Success Indicator	Unit	Actual Value for Financial Year 2008-09	Actual Value for Financial Year 2009-10	Target Value for Financial Year 2010-11	Projected Value for Financial Year 2011-12	Projected Value for Financial Year 2012-13
6.To monitor the Twenty Point Programme (TPP)-2006 and release regular reports.	Compilation and onward transmission of Monthly Progress Reports (MPRs) of TPP-2006.	Transmission of each MPRS upto 25th of succeeding month.	No. of MPRs transmitted in time	12	12	6	12	12

Section 4:

Description and Definition of Success Indicators and Proposed Measurement Methodology

1. State Income Estimates

Growth in GDP as well as Per Capita Income are very important indicator for measuring level of development of a state or country. Estimation of the pace of change in different sectors of economy is crucial to formulate the policies for balanced economic growth. This task can only be achieved through the estimation of State Income from different sectors at a specific interval of time. State Income Estimates measure the value of goods and services produced during a given period of time without duplication. State Income can be defined as the income originated within the boundaries of the State or as the income received by the normal residents of the state.

State Income Branch of this Organisation performs the task of compilation of State Income Estimates. The estimates of State Income (State Domestic Product) are prepared annually for all the Sectors i.e. Primary, Secondary and Tertiary sector both at constant and current prices. The latest base year is 2004-05. Gross State Domestic Product (GSDP) and Net State Domestic Product (NSDP) for different sectors are drawn under this. From NSDP, Per Capita Income is worked out by dividing the total NSDP with mid-year population.

2. Statistical Abstract of Punjab

It is the major publication of this Organisation consisting of 37 chapters on various socio-economic and administrative aspects of the State. It is brought out annually and presented in the Budget Session of Punjab Vidhan Sabha alongwith other documents. This Organisation is the only State Statistical Bureau in India which publishes the Abstract in annual periodicity.

This publication is very useful to planners, scholars and to those who are engaged in research and economic analysis and has very high demand from these sections.

3. Economic Survey of Punjab

Economic Survey of Punjab is also brought out annually and presented in the Budget session of the Punjab Vidhan Sabha. It consists of an overview of the state's economy wherein an analysis of growth/change in contribution of different sectors of economy is made and emerging trends of various socio-economic aspects of the state are highlighted.

Status of main sectors of economy viz. Agriculture, Energy, Industry, Employment, Finance/Banking & Credit, Human Development is presented in the survey.

4. Basic Statistics of Punjab

This publication is the synthesis of the voluminous publication 'Statistical Abstract' which is prepared annually. This data is useful for preparing annual plan, budget speech and budget documents. It provides timely data on socio-economic aspects of the economy.

5. Economic & Purpose Classification of Budget

This publication is annually prepared on the basis of State Budget presented in the budget session of State Legislative Assembly. Public Finance Branch of this office compiles the data from budget document economic category-wise and purpose-wise. Compiled data is submitted to Central Statistical Organisation (CSO), GOI for approval.

This publication serves as a significant guide to policy makers for planning the expenditure in the best possible manner to attain socio-economic goals. At the same time, it is intended to provide useful information to researchers, scholars and administrators.

6. Village Directory

Under the 73rd and 74th Constitutional Amendments, more powers and responsibilities have been delegated to Local Govt. Bodies at grass root level to formulate and implement development plans. For this purpose District Planning Committees have been constituted, which has further increased the need of local level data on critical indicators for micro level planning.

The Village Directory annually prepared by the Field Operation Section of this Organisation, covers over 250 items of village-wise data. This village/block-wise information is annually collected by Investigators posted at Block level and

forwarded to state headquarter by District Statistical Offices after scrutinizing. At State level this information is compiled district/block-wise for the preparation of Village Directory. As directed by Planning Commission, Govt. of India, Village Directory of each district of the state has been placed on website since 1998-99.

7. Consumer Price Index (CPI)

Prices are crucial indicator of economy and its pace affects the life of each and every citizen in society. Price Index depicts the change in prices at a given period of time as compared to a base period. Price Section of this Organisation prepares Consumer Price Index (CPI) on monthly basis. For this purpose weekly prices of 70 commodities and monthly prices of 82 commodities are collected from six selected centres through out the State. These six centres have been selected keeping in views their Industrial importance. On the basis of prices collected, indices are worked out and issued regularly every month to a large number of employers and employees associations and govt. agencies within the State and outside. These indices are also published in the Punjab Govt. Gazette for general information of public.

8. Index of Industrial Production (IIP)

It indicates the change in the status of production in the industrial sector for a given period of time as compared to base year. The current series of the IIP is having base year 1993-94 covering 111 items from 904 factories in three sectors i.e. Registered Manufacturing, Mining & Quarrying and Electricity. The information is collected quarterly from District Industry Centers and compiled at state level.

IIP depicts the state's Industrial growth. It is useful for planners, entrepreneurs and researchers etc. After preparation, IIP is published in the State Statistical Abstract and Economic Survey of Punjab.

9. Census of Punjab Govt. & Semi-Govt. Employees

A large portion of the State's budget is spent on salaries of state govt. and semi-govt. employees. An account of number of employees is very much needed to be maintained to assess the expenditure in this context in coming years. The Demography Section prepares and releases an annual publication namely Census of Punjab Govt. and Semi-Govt. Employees of the state as on 31st March for the respective year. It includes the number of employees working in various Govt. offices, Boards, Corporations, Aided Institutions and Local Govt. Bodies.

The number of employees is compiled department/institutions-wise, pay scale-wise, group-wise, social category-wise and district-wise. The comparison of number of employees in the previous years is also made. The number of employees retired, and to be retiring in succeeding year and dismissed, terminated, pre-mature retired and those who have resigned in the respective year is also maintained. The expenditure made on the salaries of Govt. employees during respective year is also worked out in the report.

10. Municipal Statistics of Punjab

Economic development and urbanization are positively co-related. Increase in population on one hand and the migration of population from rural to urban area on the other causes a rapid growth in urbanization. To provide basic amenities to urban population has become a challenge for the Government for which suitable Municipal Statistics are very crucial for formulation of policies for urban development.

Demography Section of this Organisation prepares and disseminate an yearly publication i.e. Municipal Statistics of Punjab which contains District/Municipality-wise statistics pertaining to area and population, vital and health, educational and cultural facilities, public utilities, housing, roads and communication, employment, banking, veterinary & sports facilities, rest houses, filling stations and gas agencies etc. To prepare this publication, information from all the Municipalities is annually collected via district statistical offices in a set of performae prescribed by CSO, GOI. This information is compiled at state level.

11. Building Construction Cost Index (BCCI)

House is one of the three basic necessities of human beings. It is the basic responsibility of welfare state to develop a socio-economic set up in which each citizen can fulfill his three basic necessities i.e. food, cloth and house. It is the duty of the state Govts. to formulate suitable policies in this context. Besides, construction sector is a rapidly growing sector of the economy which provides employment avenues to a large number of people. Therefore, the housing statistics are very much needed for formulating suitable policies in this regard.

Demography Section of ESO, alongwith other statistical activities, collects data on housing statistics, under which, inter-alia, Building Construction Cost Index (BCCI) is quarterly/annually prepared, which depicts the level of building construction cost at a given period of time vis-à-vis a base period. The latest base

year is 1999-2000 in this regard. To compile the BCCI, prices of various building material items as well as wage rates of construction labour are collected from the selected centres in districts on quarterly basis. The information is compiled at State level and BCCI is prepared and sent to National Buildings Organisation (NBO), MOSPI, Govt.of India. It is also disseminated in the Statistical Abstract of Punjab.

12. Evaluation of Development Programmes/Schemes

To achieve the goals envisaged under development programmes/schemes, the evaluation of programmes/schemes is very much needed. The deficiencies and bottlenecks in the implementation of a programme/scheme can only be identified through its evaluation. In an evaluation, besides underlining the deficiencies and bottlenecks, the suggestions are also made to remove the underlined deficiencies and bottlenecks.

The Evaluation Branch in ESO Punjab performs the task of evaluation. This Branch has completed 149 evaluation studies since its inception in 1964. One evaluation unit consists of one Research Officer and 3 Assistant Research Officers. One evaluation unit has to complete one evaluation study in a time span of 8-12 months. After completion, evaluation report is send to the concerned department for comments on the recommendations of the study. After receiving comments from the concerned department the counter-comments are prepared and got approved from the Economic Adviser. Then the report, alongwith comments and counter-comments is put in the meeting of the State Evaluation Committee (SEC) for final approval and thereafter the approved report is sent to concerned department for implementation of recommendations.

At present, evaluation section lacks the requisite staff as large number of posts are lying vacant in the department. Hence, only one study is taken in hand at a time.

13. Survey of Non-Profit Institutions (NPIs)

MOSPI, GOI conducts various surveys from time-to-time to get statistical information pertaining to different socio-economic aspects required by Govt. of India to formulate policies and plans at national and sub-national level. These surveys are mostly conducted through the State Statistical Bureaus. At present, survey of Non-Profit Institutions (NPIs) has been assigned to ESO, Punjab since 2008. The 1st Phase of this survey has already been completed under which the

directory of all 48850 NPIs registered in the state had been prepared and sent to CSO, MOSPI. Thereafter, CSO, MOSPI has assigned the work of 2nd Phase of this survey in which the detailed survey of all the registered NPIs is being conducted. The field work of 2nd Phase of survey has been carried out by the staff of District Statistical Offices in all districts. The information collected in the field survey is being computerised in a prescribed software at district level, after which, computerised information will be supplied to MOSPI, GOI.

14. Implementation of Decentralised Planning through District Planning Committees (DPC)

Under the 73rd and 74th Constitutional Amendments, more powers and responsibilities have been delegated to Local Bodies at grass root level to formulate and implement development plans. For this purpose District Planning Committees have been constituted.

Under decentralised planning, funds under various development plan schemes are provided to DPCs to execute development works at district level. The Committees formulate District Development Plans and take all decisions in respect of allocation of development works to be executed under various plan schemes. The office of Deputy Economic & Statistical Adviser at district level provides all the secretarial services to DPCs and Deputy Economic & Statistical Adviser acts as Joint Secretary of DPC. The office of Deputy Economic & Statistical Adviser gets proposals/estimates from concerned offices at district level under plan schemes and releases amount as per the decisions of DPC. It collects expenditure reports and utilization certificates pertaining to amount released for various development works and appraises the State Planning Department.

15. MPLAD Scheme

The Prime Minister on 23rd December, 1993 announced the "Member of Parliament Local Area Development Scheme (MPLADS)" in the parliament. Pursuant to the guidelines, Ministry of Statistics and Programme Implementation (MOSPI), GOI has been looking after the scheme at all India level.

For effective implementation of the works taken up under this scheme, each State Govt. has designated one nodal department for physical monitoring through field inspection and for co-ordination with MOSPI. In Punjab, the Department of Planning is nodal department for this purpose. Economic & Statistical Organisation (ESO), Punjab, under Planning Department, is performing

the duty of nodal department for this scheme and maintaining liaison with the Deputy Commissioners at the district level and MOSPI, GOI.

At the district level, the Deputy Economic and Statistical Adviser's office at district level performs the duty as nodal agency under the supervision of Deputy Commissioner. Funds to the tune of Rs. 2.00 crores are annually allotted to each MP under this scheme which are allocated on the basis of recommendations made by the respective MP and are spent on local development works under the supervision of Deputy Commissioners.

16. Twenty Point Programme (TPP-2006)

The TPP- 2006, a package of social sector schemes and programmes, consists of 20 points and 66 items being administered by various Ministers of Govt. of India and implemented by State/UTs. The Ministry of Statistics and Programme Implementation (MOSPI), GOI monitors the programme in totality at national level. For this purpose monitoring committees have also been set up by States at state and district level. MOSPI monitors the programme on the basis of performance reports received from the States/UTs and Central Nodal Ministries. This Organisation brings out Monthly Progress Reports (MRP) indicating achievements of various department and agencies in respect of schemes/programmes covered under TPP-2006 on the basis of information received from concerned quarters. MPR is uploaded every month on website.

Section 5:
Specific Performance Requirements from other Departments
that are Crucial for delivering Agreed Results

SN	Relevant Success Indicator	Departments	Requirements	What happen if you do not get it ?
1	State Income Estimates	Punjab's different Departments/Corporations/Boards/Local Bodies and Central Statistical Organisation (CSO), GOI.	Timely receipt of information pertaining to compilation of State Income Estimates.	The preparation of State Income Estimates can be delayed on late receipt of information from concerned quarters which may affect the decision of GOI on the fixation of borrowing of state.
2	Statistical Abstract of Punjab	State Govt. deptts., Universities, Corporations, Central Govt. deptts. etc.	Timely receipt of data on related socio-economic aspects.	Publication can not be printed in time for presentation in Budget Session of Legislative Assembly or old data has to be repeated.
3	Economic Survey of Punjab	Different Branches of ESO, Punjab which supply information pertaining to this publication by getting it from various Govt. offices/agencies.	Timely receipt of information from all quarters.	-do-
4	Basic Statistics of Punjab	State Govt. deptts., Universities, Corporations, Central Govt. deptts. etc.	Timely receipt of data on related socio-economic aspects.	Publication can be delayed if information not received in time.
5	Economic and Purpose Classification of Budget	1. Finance Department, Punjab.	Budget Documents to be supplied in time.	Publication can be delayed.
		2. Central Statistical Organisation (CSO), GOI.	Approval of compiled data to be given in time.	
6	Village Directory	Offices of Dy. Economic & Statistical Advisers in all districts which collect village-wise information in respect of each Block and forward it to head quarter.	Timely receipt of information from all districts.	Preparation of District-wise Village Directory can be delayed on late receipt of information.

Section 5:
Specific Performance Requirements from other Departments
that are Crucial for delivering Agreed Results

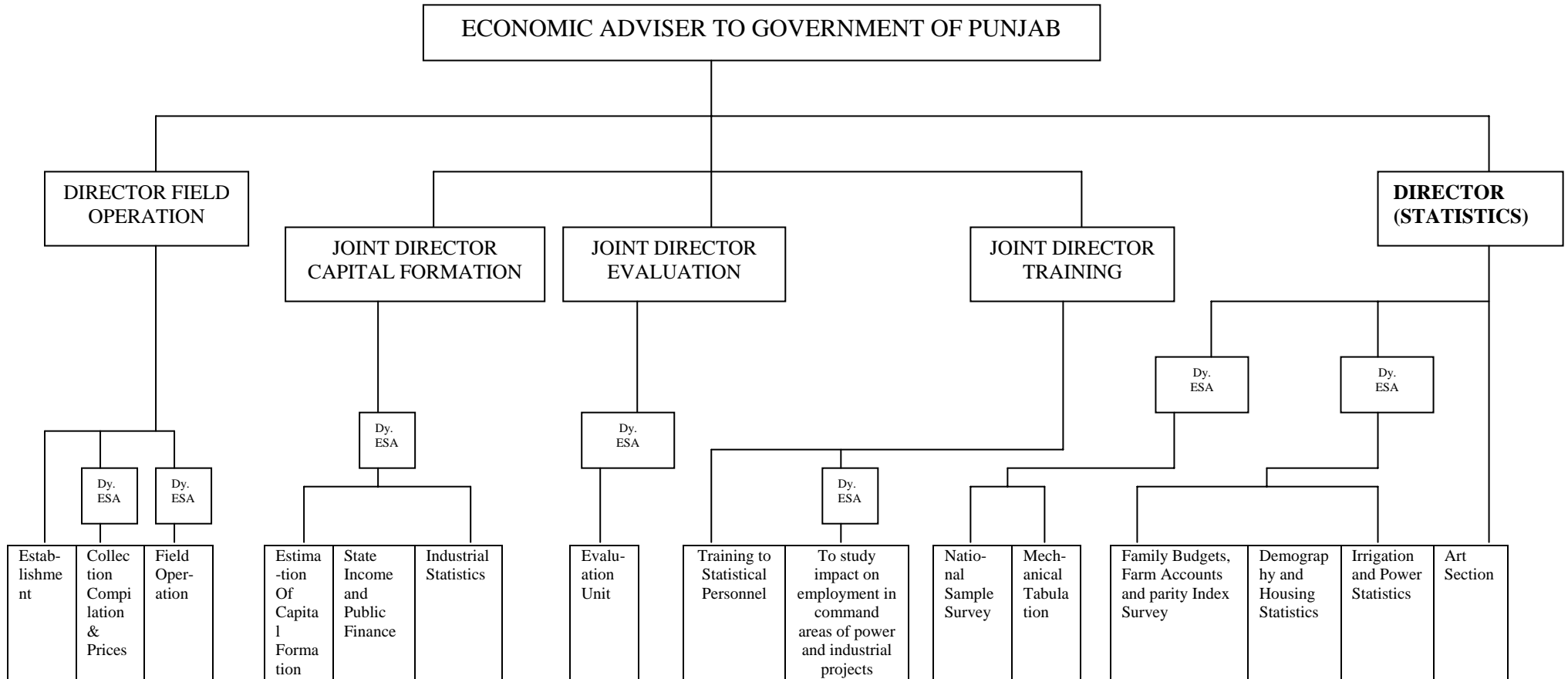
SN	Relevant Success Indicator	Departments	Requirements	What happen if you do not get it ?
7	Consumer Price Index (CPI)	Offices of Deputy Economic & Statistical Advisers in all Districts.	Timely receipt of information pertaining to prices of selected commodities.	Preparation of CPI can be delayed.
8	Index of Industrial Production (IIP)	District Industry Centres (DICs) in districts.	Information of 111 items from 904 factories is required to be received in time through DICs.	Preparation of IIP can be delayed.
9	Census of Punjab Govt. & Semi-Govt. Employees	145 Govt. offices, 35 Boards/Corporations at State level and offices of Dy. Economic & Statistical Advisers in all districts which collect this information from various offices situated of the districts.	Timely receipt of information pertaining to publication.	Preparation of publication can be delayed due to late receipt of information.
10	Municipal Statistics of Punjab	Offices of Dy. Economic & Statistical Advisers in all districts which send this information by collecting it from Municipalities of the districts.	In time receipt of information from all quarters	- do-
11	Building Construction cost Index (BCCI)	Offices of Dy. Economic & Statistical Advisers offices in all districts which collect this information from selected Centres.	- do-	Compilation of BCCI can be delayed due to lately receiving of information.
12	Evaluation of development programme & schemes	Concerned Department to which the Programme/ scheme to be evaluated is related.	Timely receipt of required information pertaining to evaluation study.	The evaluation work can be delayed due to late receipt of information.

Section 5:
Specific Performance Requirements from other Departments
that are Crucial for delivering Agreed Results

SN	Relevant Success Indicator	Departments	Requirements	What happen if you do not get it ?
13	Completion of Non-Profit Institutions Survey assigned by CSO,GOI	Offices of Deputy Economic & Statistical Advisers in all districts.	Timely completion of survey work in respect of field work and tabulation.	Late submission of Survey Report to GOI which will further delay all India Report.
14	Provision of efficient secretarial services to District Planning Committees for decentralised planning.	Planning Department, Punjab and various offices at district level.	Timely receipt of sanctions from Planning Department, Punjab and timely receipt of feedback from concerned district level offices.	The release of funds can be affected.
15	Implementation and Monitoring of MPLAD Scheme	i) Offices of Dy. Economic & Statistical Advisers in all districts ii) Concerned MPs iii)Concerned executive agencies.	i)Timely release of previous instalments of each MP. ii) Timely receipt of information in respect of Monthly Progress Reports. iii) Timely receipt of recommendations from concerned MPs. iv) Timely receipt of requisite feedback from concerned executive agencies.	i) Release of installments of MPs from GOI can be delayed. ii) Preparation of Monthly Progress Reports can be delayed.
16	Twenty Point Programme (TPP)-2006	Different State Govts. Departments/Boards/Corporations.	Timely receipt of information from concerned quarters.	The preparation of Monthly Progree Report can be late due to late receipt of information from concerned quarters.

Annexure-1

ORGANISATIONAL CHART- HIERARCHICAL STRUCTURE OF ESO. PUNJAB



DESA - Deputy Economic & Statistical Adviser